

# S.T.C.

Natural frequency : (1)  
10 to 25 Hz



## DESCRIPTION

The S.T.C. mount comprises a rubber ring bonded to a central tube.

- Inner tube : mild steel.
- Bonded rubber in the form of a ring at the top with a collar below which is used for fixing.

## OPERATION

The design of the S.T.C. mount gives the following basic characteristics :

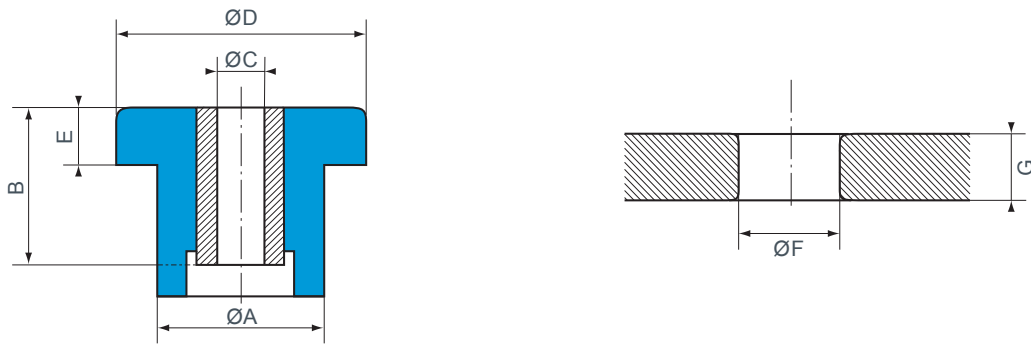
- the rubber works in compression;
- anti-rebound;
- can be used as safety mounting.

### Advantages

- Simple to fix.
- Simple and economical.
- Extensive range of loads.

1) the indicated natural frequency, are valid for the maxi loads of the ranges of use quoted in the paragraph : TECHNICAL CHARACTERISTICS.

# DIMENSIONS



| Reference | Ø A (mm) | B (mm) | Ø C (mm) | Ø D (mm) | E (mm) | Ø F (mm) | G (mm) |
|-----------|----------|--------|----------|----------|--------|----------|--------|
| 539887    | 20,6     | 17,5   | 10       | 27,7     | 5,6    | 20,6     | 8      |
| 539190    | 31,5     | 25,4   | 13       | 44,5     | 10,4   | 31,5     | 10     |
| 539886    | 34,3     | 35     | 13       | 50,8     | 13,5   | 34,3     | 16     |
| 539191    | 41,1     | 44,5   | 16       | 63,5     | 15,7   | 41,1     | 19     |
| *539920   | 38       | 23     | 16       | 64       | 16     | 38,5     | 19     |
| 539951    | 56,6     | 50,8   | 20       | 95       | 25,4   | 56       | 20     |

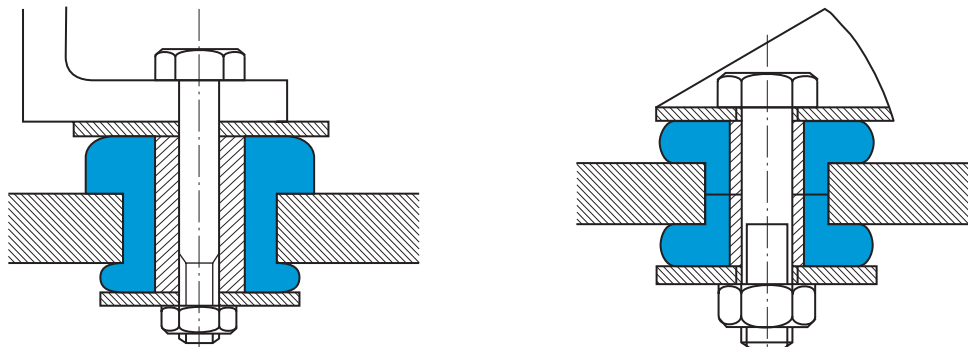
\* This S.T.C. is mounted in pairs : see assembly  
See current price list for availability of items.

# OPERATING CHARACTERISTICS

| Reference | Hard. Shore A | Nominal static load (daN) | Deflection (mm) |
|-----------|---------------|---------------------------|-----------------|
| 539887    | 45            | 8-35                      | 0,7             |
|           | 60            | 10-50                     | 0,7             |
| 539190    | 45            | 15-75                     | 1,2             |
|           | 60            | 25-100                    | 1,2             |
| 539886    | 60            | 35-150                    | 1,2             |
|           | 75            | 80-330                    | 1,2             |

| Reference | Hard. Shore A | Nominal static load (daN) | Deflection (mm) |
|-----------|---------------|---------------------------|-----------------|
| 539191    | 60            | 60-250                    | 2               |
|           | 75            | 125-500                   | 2               |
| 539920    | 45            | 100-400                   | 2               |
|           | 75            | 250-1 000                 | 1               |
| 539951    | 45            | 175-700                   | 3               |
|           | 65            | 250-1 000                 | 3               |

# ASSEMBLY



For **539920**

This S.T.C. is mounted in pairs : see assembly